

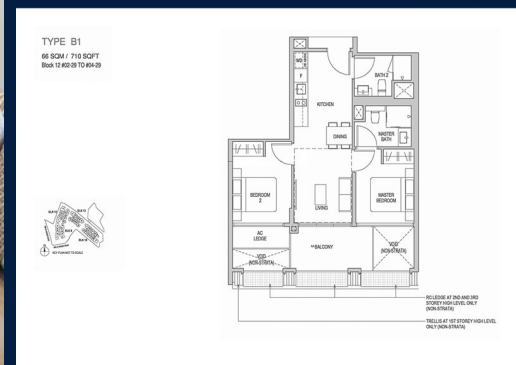
# FOR SALE

## RESIDENTIAL - CONDOMINIUM 710SQFT (66SQM) / CALL FOR PRICE!

+65 9632 2893



2 - Bedroom



### RESIDENTIAL - CONDOMINIUM

8,10,12,14 RIFLE RANGE ROAD, CLEMENTI PARK,  
UPPER BUKIT TIMAH, SINGAPORE 588376

- LISTING ID: SGLD05013578
- TENURE: LEASEHOLD 99
- TITLE: N/A
- SIZE BUILT-UP: 710SQFT (66SQM)
- SIZE LAND: N/A
- NO. OF FLOORS: 5
- FLOOR/LEVEL: N/A - N/A
- BED ROOMS: 2
- BATH ROOMS: 2
- MAIDS ROOMS: N/A
- PARKING SPACES: N/A
- LAYOUT TYPE: INTERMEDIATE
- FACING: N/A
- VIEWING: N/A
- SELLING PRICE: **CALL FOR PRICE!**
- COMPLETION YEAR: 2024
- CONDITION: ORIGINAL CONDITION
- FURNISHING: PARTIALLY FURNISHED
- LISTING DATE: JUN 20, 2019

### MAYFAIR GARDENS

Condominium for Sale: Partially furnished. 2 bedroom, 1 bathroom. Completed in 2024, this unit is in original condition. Tenure: Leasehold 99 Located in Singapore's district D21 near Clementi Park, Upper Bukit Timah in the area Central West (Central region).

#### INTERIOR FACILITIES

- Air-Conditioning

#### EXTERIOR FACILITIES

- 24 Hours Security
- Covered Car Park
- Jacuzzi
- Landscaped Garden

VISIT THIS PROPERTY AT: <https://www.susanwee.com/property/SGLD05013578>

### SUSAN WEE - HUTTONS ASIA PTE LTD

3 Bishan Place #05-01 CPF Bishan Building  
D20, 579838, Singapore

+65 9632 2893  
WhatsApp Me

susanwee@huttonsgrp.com

<https://www.susanwee.com>



Scan QR Code

**Huttons**® Call for Viewing  
The Agency of Choice +65-96322893