

# FOR SALE

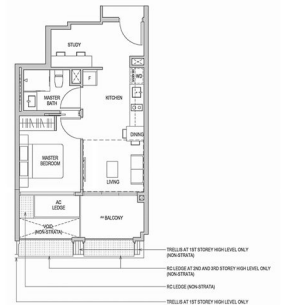
## RESIDENTIAL - CONDOMINIUM 560SQFT (52SQM) / CALL FOR PRICE!

+65 9632 2893



1 - Bedroom + Study

TYPE AS1  
52 SQM / 560 SQFT  
Book 12 452 07 TO 464 27



INCLUDES 1ST STOREY HIGH LEVEL ONLY (COMMON AREA)  
INCLUDES 2ND AND 3RD STOREY HIGH LEVEL ONLY (COMMON AREA)  
EXCLUDES COMMON AREA  
INCLUDES 1ST STOREY HIGH LEVEL ONLY (COMMON AREA)

### RESIDENTIAL - CONDOMINIUM

8,10,12,14 RIFLE RANGE ROAD, CLEMENTI PARK,  
UPPER BUKIT TIMAH, SINGAPORE 588376

- LISTING ID: SGLD67326253
- TENURE: LEASEHOLD 99
- TITLE: N/A
- SIZE BUILT-UP: 560SQFT (52SQM)
- SIZE LAND: N/A
- NO. OF FLOORS: 5
- FLOOR/LEVEL: N/A - LOW FLOOR
- BED ROOMS: 1+1
- BATH ROOMS: 1
- MAIDS ROOMS: N/A
- PARKING SPACES: N/A
- LAYOUT TYPE: INTERMEDIATE
- FACING: N/A
- VIEWING: N/A
- SELLING PRICE: **CALL FOR PRICE!**
- COMPLETION YEAR: 2024
- CONDITION: ORIGINAL CONDITION
- FURNISHING: PARTIALLY FURNISHED
- LISTING DATE: JUN 20, 2019

### MAYFAIR GARDENS

Condominium for Sale: Partially furnished. 1 bedroom, 1 bathroom. Completed in 2024, this unit is in original condition. Tenure: Leasehold 99 Located in Singapore's district D21 near Clementi Park, Upper Bukit Timah in the area Central West (Central region).

#### INTERIOR FACILITIES

- Air-Conditioning
- Balcony

#### EXTERIOR FACILITIES

- 24 Hours Security
- Covered Car Park
- Jacuzzi
- Landscaped Garden

VISIT THIS PROPERTY AT: <https://www.susanwee.com/property/SGLD67326253>

### SUSAN WEE - HUTTONS ASIA PTE LTD

3 Bishan Place #05-01 CPF Bishan Building  
D20, 579838, Singapore

+65 9632 2893  
WhatsApp Me

susanwee@huttonsgrp.com

<https://www.susanwee.com>



Scan QR Code

**Huttons**® Call for Viewing  
The Agency of Choice +65-96322893